

LUXURY



PAD London: art and design fair preview in pictures

Home > Luxury > Design

30 Sep 2017

PAD London: art and design fair preview in pictures

< > 1 of 19 View All [f share](#) [Twitter](#) [Pinterest](#) [Email](#)



We profile some of the highlights ahead of the 11th edition of [PAD London](#), the celebrated art and design fair which takes over Berkeley Square 2-8th October...

Jinshi Pink Jade Coffee Table, 2017 in pink jade and anodized stainless steel, limited edition of 8 + 4AP, designed by [Studio MVW](#), exhibited by [Galerie BSL](#)

CREDIT: ALAIN CORNU



Claret jug, 1885 designed by Christopher Dresser, exhibited by [Oscar Graf](#)

CREDIT: JACQUES PEPION



Symmetry and Increase Twist, 2016, in stoneware, designed by Matthew Chambers, exhibited by [Mouvements Moderne](#)



Trine Chairs from the Organic Collection, 2017 in oak, designed by John Makepeace, exhibited by [Sarah Myerscough Gallery](#)



Fonteyn Chair, 2017 edition of 8 + 2AP in verde Guatemala marble and burr oak veneer by [Brooksbank & Collins](#), exhibited by [Gallery Fumi](#)

CREDIT: SHIRA KLASMER



Cabinet, 2017, in porcelain, limited edition of 8 pieces, designed by Doshi Levien, exhibited by [Sèvres](#)



Pair of Prefacto Monsieur and Madame Armchairs in black lacquered metallic tubular structure, detached armrests with varnished wood cuff, by Pierre Guariche Produced by Airbone, exhibited by [Dimore Gallery](#)



Pica et Pica d'Or Pair of low tables, 2016 all bronze, designed by Hubert Le Gall, exhibited by [Avant-Scène](#)

CREDIT: BRUNO SIMON



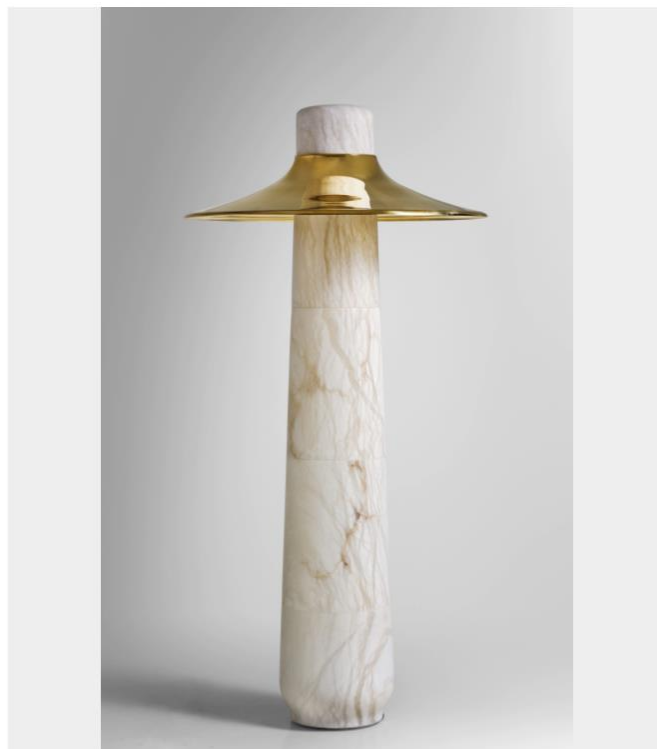
Pumage cabinet, 2017 from the Synthesis Collection in royal ebony, satined brass with sycamore interior, designed by Hervé Langlais, exhibited by [Galerie Negropontes](#)



Abyss coffee table in wood, resin, glass and acrylic designed by Christopher Duffy, exhibited by [Sarah Myerscough Gallery](#)



Chairs by Frits Schlegel for Fritz Hansen, 1930s, in beech with curved arms and interlaced seagrass seat and back exhibited by [Rose Uniacke](#)

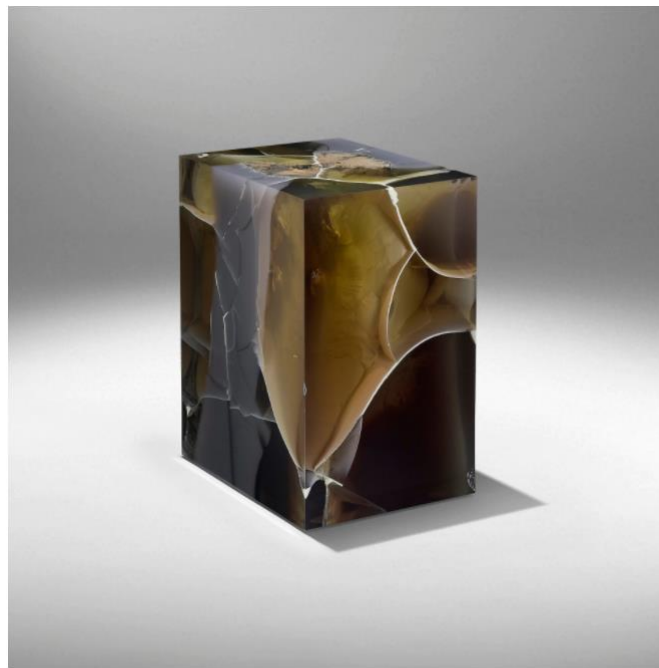


Cordouan Floor Lamp in alabaster and polished copper, edition of 8 + 4, designed by Eric Schmitt, exhibited by [Dutko](#)



Dragonfly coffee table in green designed by [Hella Jongerius](#), exhibited by [Galerie Kreo](#)

CREDIT: SYLVIE CHAN-LIAT



Stone Fossil Obsidian, 2017 in epoxy resin, pigment, wood, edition of 8 +2AP, designed by [Studio Nucleo](#), exhibited by [Ammann Gallery](#)



Sofa Model 801 designed by Jorge Zalsupin, Brazil 1960, exhibited by [Nilufar](#)

CREDIT: DANIELE IODICE



Melon dining table, 2017 in marble and steel, designed by Bethan Laura Wood, exhibited by [Nilufar Gallery](#)

CREDIT: DANIELE IODICE



Kasimir Console in statuary white marble, edition of 8, designed and exhibited by [Hervé van der Straeten](#)



Chieftain Armchair designed by Finn Juhl for Niels Vodder
Denmark, 1949 in teak and leather, exhibited by Modernity
Stockholm

CREDIT: ÅSA LIFNER



Paille, gold on white background; Galaxie, gold on Sèvres
blue background; Tourbillon, gold on white background and
Paille, gold on Sèvres blue background, Diane service, 2017,
bread plate in porcelain, designed by Philippe Apeloig,
exhibited by Sèvres-Cité