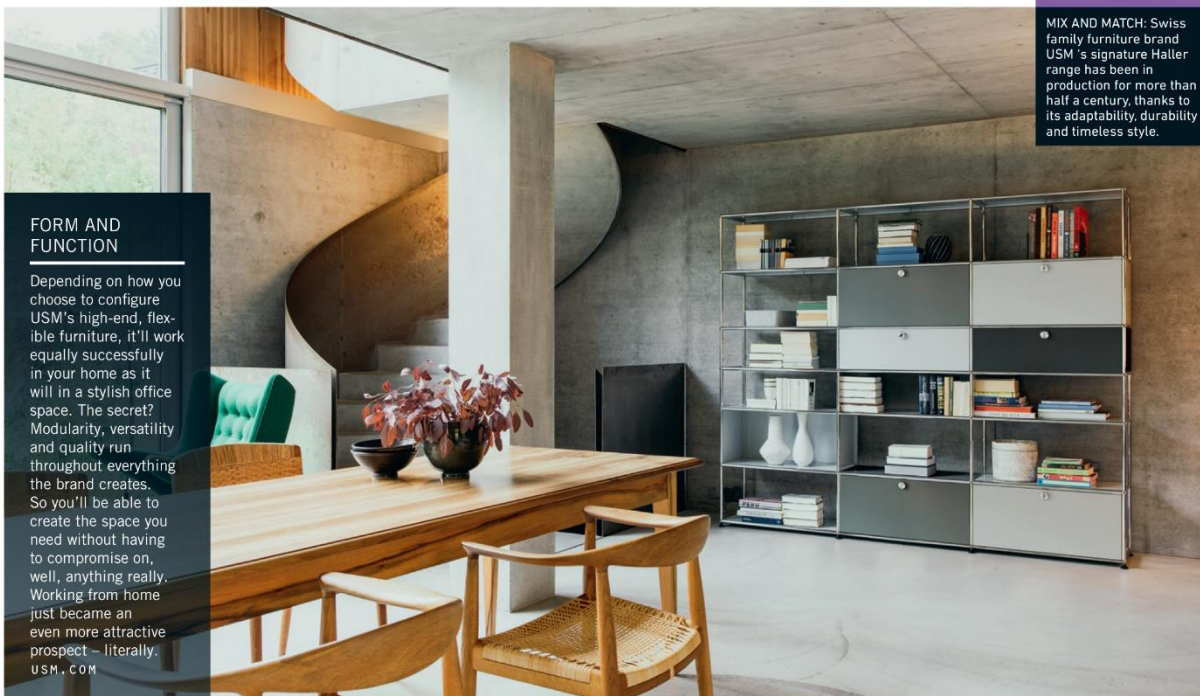


DESIGN CONTEMPORARY

WORK, REST AND PLAY

USM furniture is all about versatility. Whether you're kitting out a new office, updating your personal home, or combining the two with a home office, USM has the design solutions to help



FORM AND FUNCTION

Depending on how you choose to configure USM's high-end, flexible furniture, it'll work equally successfully in your home as it will in a stylish office space. The secret? Modularity, versatility and quality run throughout everything the brand creates. So you'll be able to create the space you need without having to compromise on, well, anything really. Working from home just became an even more attractive prospect – literally. USM.COM

MIX AND MATCH: Swiss family furniture brand USM's signature Hatter range has been in production for more than half a century, thanks to its adaptability, durability and timeless style.



◀ HELLO, PETAL

Jeremy Cole Camelia

Jeremy Cole's flora-inspired collections are popular worldwide, thanks not only to their contemporary style and timeless beauty, but also the meticulous levels of care and skill required to complete each handmade piece. The new Camelia light demonstrates exactly why all that effort is totally worth it – each delicate, ceramic petal manipulates light to absolutely stunning effect. For more information, see JEREMYCOLE.NET

TOTALLY PAD ▶

PAD London 2018

Expect the usual stellar selection of design, decorative arts and 20th century art at *PAD London*, which returns to Berkeley Square, Mayfair from 1-7 October. There are 68 exhibitors attending, bringing with them an eclectic array of items that won't fail to inspire, such as this André Sornay lacquered armchair presented by Alain Marcelpoil Gallery. For more information, see PAD-FAIRS.COM



PHOTOGRAPH (LEFT) BONO ANGLIUM