

15th
PAD
L O N D O N
DESIGN + ART



PRESS KIT

PAD

L O N D O N
DESIGN + ART

GALERIE JACQUES LACOSTE FR
THIERRY LEMAIRE FR
MAISONJAUNE STUDIO FR
MAISON PARISIENNE FR
MARCELPOIL FR
GALERIE MEUBLES ET LUMIÈRES FR
MODERNITY UK,SE
DAVID MORRIS UK
ANAH MYERSCOTT GALLERY U
JAFAR GALLERY
JEMOTIC GALLERY DE
ER GALLERY



CONTENTS

01 Press Release

05 Practical Information

07 Exhibitors List

09 Exhibitors

30 Selection Committee

32 PAD London Prize Jury

34 Partners

PRESS RELEASE



PAD LONDON

Berkeley Square, 10-15 October 2023

Leading Design Fair Celebrates its 15th Anniversary Edition

As the international collecting community descends on London in October, PAD London prepares to celebrate 15 vibrant years of exceptional design in its landmark location of Berkeley Square in Mayfair. Launched in 2007 as the first international fair dedicated to design in the UK, PAD London has been unwavering in its commitment to fostering and promoting the prolific evolution of design in all its forms.

“Following the successful 25th edition of PAD Paris, I am delighted to present the 15th anniversary edition of PAD London, marking a significant milestone in the fair’s history. Over the course of fifteen years, our dedicated efforts have transformed PAD London - the only design fair in the UK - into the popular and vibrant platform it is today: a place of boundless inspiration, dedicated to creativity, quality, learning and discovery for all.” –Patrick Perrin, Founder and CEO of PAD

PAD LONDON 2023 IN FIGURES

- 15th Anniversary Edition
- 62 galleries from 16 countries across Europe, Asia and North America
- 12 first-time exhibitors
- Designers from over 30 countries

CONTEMPORARY DESIGN

New Exhibitors

Adding fresh perspectives to its rich panorama of contemporary design, PAD’s 2023 edition will see the arrival of cutting-edge galleries unveiling new works by rising stars of the design world.

Working with a brilliant cohort of designers and architects to create bespoke pieces with truly *made in Italy* quality, **Melchiorri Studio Gallery** will introduce the new furniture collection of Livio Cioffi and that of Alessandra Melchiorri, founder of Studio Sam. **Objects with Narratives** will present bold, gravity-defying wooden furniture by Mircea Anghel and dazzling bronze lighting pieces by Vladimir Slavov, while **Ormond Editions** will showcase eye-catching furniture and lighting pieces by Garnier & Linker, architect Glenn Sestig, ceramic artist Yoona Hur and designer Pieter Maes. **Galerie Philia** will stage *Gravity and Grace*, a curated exhibition of brand-new onyx works by eight international designers and artists including Studiopepe, Pietro Franceschini and Andres Monnier.

Rounding up the stable of new contemporary design exhibitors is **Secret Gallery**, a Parisian art and design gallery founded by Nathalie Elmaleh and Laurent Teboul which will present *Lala*, a gorgeous cabinet with cloisonné enamel tile decoration by Reda Amalou, and paintings composed of stoneware sculptures by Yann Maseyeff.

Returning Exhibitors

Leading forces in contemporary design who have contributed to the fair’s success over the years will return this year.

Spanish **SIDE Gallery** will present the new resin furniture collection called *Stacked* by Sabine Marcelis. They will also feature furniture pieces by Charlotte Kingsnorth and Gyuhan Lee, conceived as a reference to the 1970s Global Tools movement spanning Italian Radical Architecture, Arte Povera and Conceptual Art. As well as the latest plaster works by Nebil Zaman and copper vases by Seung Hyun Lee.

In a booth curated by Nilufar, leading Indian designer **Vikram Goyal** will showcase collectible design pieces that demonstrate his New Delhi-based workshop’s mastery of metal. **Nilufar** will also unveil a curated

selection of contemporary pieces by Objects of Common Interest, Lola Montes Schnabel, Draga & Aurel, Bethan Laura Wood and Maarten de Ceulaer. **Ammann // Gallery** will surprise with a bench made from old objects casted in resin by Studio Nucleo. **Spazio Nobile** will introduce a ceramic wall installation by Ann Beate Tempelhaug, a sideboard by Quentin Vuong and Meccanic Construction, a floor lamp by Joost van Bleiswijk, while **Galerie Kreo** will exhibit the latest lighting pieces in perforated anodized aluminium by Konstantin Grcic.

Achille Salvagni Atelier will unveil a distinctive presentation of the designer's newest designs inspired by the pioneering style of American interior designer Bill Willis and by Morocco's unique blend of North African, Mediterranean and Islamic styles. Amongst them are a new parchment and bronze Indore cabinet realised in blue and yellow hues inspired by the Jardin Majorelle in Marrakech, the zoomorphic Alligator sofa and Brera chandeliers. On show at **Atelier Adrian Sassoon**, Kate Malone will delight with *Pair of Pine Cones*, two sculptures in crystalline-glazed stoneware, Ashraf Hannah will display cult and altered hand-crafted earthenware, while Vezzini and Chen will unveil new in blown and cut black glass sconces.

New Design Commissions

Striking new commissioned pieces by international designers and artists will enrich the fair. *Light Entanglements* by Stine Bidstrup, a chandelier featuring elegant hand-blown clusters of glass, will feature at **Gallery FUMI**, alongside brand-new works from the gallery's strong roster of international designers Jie Wu, Saelia Aparicio, Glithero, JAMESPLUMB, Leora Honeyman, Sam Orlando Miller, Max Lamb and Rowan Mersh. *Tree*, a monumental light sculpture by Nacho Carbonell and a stone and dyed steel desk by Wonmin Park will be premiered at **Carpenters Workshop Gallery**. Other works commissioned specially for PAD include *Onde*, a leather ceiling lamp by Caroline Venet at **Galerie Scène Ouverte** and a unique handblown glass artwork with natural stone by Camilla Moberg at **Galerie Maria Wettergren**. Revolutionising the use of wood, Peter Marigold and Gareth Neal will unveil their latest creations at **Sarah Myerscough Gallery** and Pierre Renart will surprise with his first dining room table entirely crafted in wood at **Maison Parisienne**.

Contemporary Ceramic Experts

Joining from Paris, **Florian Daguet-Bresson** will present a striking selection of joyful ceramics by Claire Lindmer, Jongjin Park and Patricia Camet, pioneering artists in the field. Also new to the fair is South-Korean **Gallery LVS & Craft** who will premiere porcelain vessels by Lee In Hwa, Kim Deok Ho and Kim Dong Jun, all combining traditional and contemporary techniques. As well as Parisian ceramic expert **Raphaella Riboud-Seydoux** who will showcase breathtaking contemporary pieces, including colourful ceramic vases by Nathalie du Pasquier, a founding member of the 1980s-defining Memphis Group, and sculptures made of assembled fallen chestnut branches by Vincent Laval.

20TH-CENTURY DESIGN

New Exhibitors and Major Highlights

New 20th-century design exhibitors include a collaboration between modern design dealer **Giulia de Jonckhere** and gallery **New Hope** from Belgium; Luiz Kessler whose London gallery **JCRD Design** will present 20th-century Brazilian furniture by Lina Bo Bardi, Jorge Zalsupin and Jose Zanine Caldas amongst others; and Belgian historic design expert **Unforget** which will present exceptional 1950s pieces by French pioneers Jacques Adnet and Line Vautrin, amongst other vintage treasures.

Other highlights from Europe's most prominent mid-century design galleries comprise an exquisite desk by André Sornay (**Marcelpoil**) which can be transformed into a games table; a breathtaking bar cabinet in mahogany, brass, glass and mirror attributed to Otto Shulz (**Modernity**); a rare 1965 chest of drawers by Roger Landault (**Portuondo Paris**); and a blue 1970s lacquer desk by Emiel Veranneman as well as a one-of-a-kind rosewood, lacquer, leather and silver-plated metal sideboard by Pieter de Bruyne (**Patrick Fourtin**).

Galerie Jacques Lacoste will showcase exceptional 1950-60s pieces by Jean Royère while **SIDE Gallery** will focus on rare mid-century Brazilian furniture by design masters Sergio Rodrigues and Joaquim Tenreiro. 1950-70s Italian design will also be on display with showpieces by Osvaldo Borsani (**Nilufar Gallery**), Federico Murani (**Galerie Melissa Paul**) and the late celebrity photographer and furniture designer **Willy Rizzo**.

COLLECTIBLE JEWELLERY

Complementing the panorama of collectible design are eight leading contemporary and high jewellery galleries.

For his debut at PAD, **Elie Top** will take us on a walk on the wild side through the unveiling of otherworldly jewellery inspired by nature's fiercest creatures, including a stunning emerald crocodile *Bouclier* ring and a diamond *Serpent* cuff with eyes studded with rubies. **Elisabetta Cipriani** will showcase jewellery from a charming cohort of male artist jewellers of Italian heritage including Massimo Izzo and Giampaolo Babetto, all employing traditional techniques and sensibilities. A collection of upcycled brass shavings by Maria Sole Ferragamo will also be unveiled. **Objet d'Emotion by Valery Demure** will pay homage to late Greek silversmith designer Minas showcasing his iconic music-inspired jewels and largely represent contemporary jewellery's bright young things. Amongst the highlights are psychedelic silhouettes and precious gems jewels by Stephanie Wenk at the helm of iconic Brazilian Maison Sauer, diamond rings subverting century-old Japanese techniques by Tokyo's coolest duo Hum, a striking line of bangles, earrings and rings all featuring a disruptive use of aluminium and enamel combined with diamonds and sapphires by Sonia Lacroix for AALTAS, and celestial palettes and subtle shades pieces by Greek designer Dorothee Potocka.

This edition will welcome back leading contemporary High Jewellery houses, some of which have been prominent fixtures at the fair. **Taffin** will present unique creations seamlessly blending natural pearls, diamonds, emeralds, and multicoloured ceramics. **Hemmerle** will showcase the *Harmony* bangle – an exquisite combination of olive wood, bronze, and white gold, adorned with diamonds, sapphires, and emeralds. **Glenn Spiro's** jewellery will highlight rare gemstones with unconventional cuts that maximize brilliance, as seen in the striking *Sunrise* earrings featuring diamonds, blue sapphires, and a tsavorite set in playful blue and green titanium. **Boghossian** will surprise with *Kissing*, a coral reef-inspired collection of diamond necklaces, rings, pendants and earrings whose morphological shapes recall the planet's four core elements: air, fire, water, and earth while intricately detailed pieces including the *Agalina* earrings featuring custom-cut blue Moonstone chunks and the *Tazlina Moonstone* necklace, resembling Antarctic glaciers and reminiscent of a past journey to Alaska will be presented by Indian star **Neha Dani**.

NOTES TO EDITORS

Founded in 2007 by fourth-generation Parisian antique dealer Patrick Perrin, PAD London is the only fair in the UK exclusively dedicated to 20th-century and Contemporary Design. The week-long event takes place every October during Frieze, in an elegant tent pitched on Berkeley Square, in the heart of London's affluent Mayfair district. PAD London is the sister fair to PAD Paris which was launched in 1998 and takes place every April in the Jardin des Tuileries.

A permanent fixture on the two capital's vibrant art and design circuits, PAD fairs have become a byword for connoisseurship, exquisite taste, and curatorial flair, showcasing the very best in 20th-century and contemporary Design from the world's leading galleries. With their distinct approach to collecting, PAD fairs epitomize how artistic genres across time and periods interact to reveal astonishing combinations and create the most individual and striking interiors.

PAD fairs cultivate eclecticism, authenticity and connoisseurship with unparalleled passion and flair. Their refined setting is designed to inspire collectors, art consultants, museum experts, interior specialists, design practitioners and the public, making PAD the only event of its kind.

PRACTICAL INFORMATION



PAD LONDON

10 – 15 October 2023
Berkeley Square, Mayfair, London W1
T: +33 (0)1 53 30 85 20
E: london@padesignart.com
www.padesignart.com

SCHEDULE

Collectors Preview
Tuesday 10 October 11am – 8pm

Jury Visit
Tuesday 10 October 10am – 12pm

Press Preview
Tuesday 10 October 12pm – 6pm

VIP Opening
Wednesday 11 October 11am – 8pm

Public Opening
Thursday 12- Saturday 14 October 11am – 8pm
Sunday 15 October 11am – 6pm

TICKETS

Online purchase available
Collector Preview: £100
VIP Opening: £75
Adults: £25
Students (with valid ID card): £15
Free entrance for children under 15
Coat check (Jacket / Helmet / Umbrella / Small bag) £2
Coat check (Suitcase / Large backpack) £5

SOCIAL MEDIA

 @padesignart #PADLondon

 @padesignartfairs

 PAD Design + Art

EXHIBITORS LIST



88 Gallery (UK)
Contemporary Design

Ammann II Gallery (Germany)
Contemporary Design

Boghossian (Switzerland)
Jewellery

Carpenters Workshop Gallery (UK, USA, France)
Contemporary Design

Chahan Gallery (France)
Contemporary and 20th-century Design

Elisabetta Cipriani (UK)
Jewellery

Stéphanie Coutas (France)
Contemporary Design

***Florian Daguët-Bresson** (France)
Glass and Ceramics

Neha Dani (USA)
Jewellery

Dumonteil Design (France, China)
Contemporary Design, Sculpture

Dutko (France)
Contemporary Art and 20th-century Design

Patrick Fourtin (France)
20th-century Design

Thomas Fritsch-Artrium (France)
Glass and Ceramics

Gallery FUMI (UK)
Contemporary Design

Portuondo Gallery (UK, USA, Spain)
20th-century Design

Galerie Gastou (France)
Contemporary and 20th-century Design

***GDJ Design / New Hope Gallery** (Belgium)
20th-century Design

Hemmerle (Germany)
Jewellery

***JCRD Design** (UK)
20th-century Design

Galerie Kreo (UK, France)
Contemporary Design

Galerie Jacques Lacoste (France)
20th-century Design

Laffanour / Galerie Downtown (France)
20th-century Design

Thierry Lemaire (France)
Contemporary Design

***Galerie LVS & Craft** (South Korea)
Glass and Ceramics

Maison Parisienne (France)
Contemporary Design

Maisonjaune Studio (France)
20th-century Design

Marcelpoil (France)
20th-century Design

***Melchiorri Studio Gallery** (UK, Italy)
Contemporary Design

Galerie Meubles et Lumières (France)
20th-century Design

Modernity (UK, Sweden)
20th-century Design

Sarah Myerscough Gallery (UK)
Contemporary Design

Nilufar (Italy)
Contemporary and 20th-century Design

Objet d'Emotion by Valery Demure (UK)
Jewellery

***Objects with Narratives** (Belgium, Switzerland)
Contemporary Design

Opera Gallery (UK)
Contemporary and Modern Art

***Ormond Editions** (Switzerland)
Contemporary Design

Portuondo Paris (France, Spain)
Contemporary and 20th-century Design

Galerie Mélissa Paul (UK)
Contemporary and 20th-century Design

***Galerie Philia** (USA, Switzerland, Singapore)
Contemporary Design

Priveekollektie Contemporary Art I Design (The Netherlands)
Contemporary Design

***Raphaella Riboud-Seydoux** (France)
Glass and Ceramics

Willy Rizzo (France, Switzerland)
Contemporary and 20th-century Design

Achille Salvagni Atelier (UK, USA, Italy)
Contemporary Design

Atelier Adrian Sassoon (UK)
Glass and Ceramics

Galerie Scène Ouverte (France)
Contemporary Design

***Secret Gallery** (France)
Contemporary Design

SIDE Gallery (Spain)
Contemporary and 20th-century Design

Spazio Nobile (Belgium)
Contemporary Design

Glenn Spiro (UK, USA, France)
Jewellery

Stefanidou Tsoukala Gallery (Greece)
Contemporary and 20th-century Design

Taffin (USA)
Jewellery

***Elie Top** (France)
Jewellery

***Unforget** (Belgium)
20th-century Design

Rose Uniacke (UK)
20th-century Design

Hervé Van Der Straeten (France)
Contemporary Design

Vertes (Switzerland)
Contemporary and Modern Art

Vikram Goyal x Nilufar (Italy)
Contemporary Design

Waddington Custot (UK)
Contemporary and Modern Art

Galerie Maria Wettergren (France)
Contemporary Design

*New exhibitors

EXHIBITORS



88 GALLERY

UK



Contemporary Design

88 Gallery London focuses on 20th-century and contemporary collectible design. Alongside searching the market for original pieces, they have collaborated with a growing number of contemporary artists and designers such as Abel Cárcamo, Ado Chale, Roxane Lahidjhi, Timothy Schreiber, Ben Storms and Roberta Verteramo.

AMMANN//GALLERY

GERMANY



Contemporary Design

As a globally respected gallerist and one of the leading forces and taste makers within the collectible design market, Gabrielle Ammann formed ammann//gallery in Cologne in 2006. Reknowned for her unique curatorial approach, she cultivates a cutting-edge program devoted to innovation and connoisseurship in the fields of fine art, design and architecture. Since the late 80's, Ammann has worked with now legendary designers such as Studio Alchimia, Ron Arad and conceptual artist Rolf Sachs.



Jewellery

Boghossian is a Geneva-based, family-run luxury jewellery house that boasts a rich history and gemmological expertise spanning over 150 years. The Maison built a reputation for innovative, often audacious designs that showcased rare gemstones in a new light. Through a combination of extraordinary gemstones and daring design, Boghossian has achieved world-record prices at auction and attracted an international clientele of high-jewellery connoisseurs.

CARPENTERS WORKSHOP GALLERY

UK/USA/France



Contemporary Design

Carpenters Workshop Gallery produces and exhibits functional art by international artists or designers, both rising and established, going outside their traditional territories of expression. Actively involved in the research and production of limited edition works, the gallery's choices are guided by seeking an emotional, artistic and historical relevance; finding that rare moment where design becomes art.

CHAHAN GALLERY

FRANCE



Contemporary and 20th-century Design

Following seven years working as the Creative Director for Europe at prestigious fashion house, Ralph Lauren, Chahan Minassian created Chahan Interior Design in 1993. After years of developing an impressive luxury interior design portfolio, in January 2019, he opened Chahan Design dedicated to his own line of furniture and lighting design.

ELISABETTA CIPRIANI

UK



Jewellery

Elisabetta Cipriani invites world leading contemporary artists to create aesthetically innovative and socially relevant wearable art projects. Since the opening of her namesake gallery in 2009, Elisabetta's pioneering vision has redefined the boundaries between jewellery and fine art, capturing the imaginations of artists and collectors across the globe.

STÉPHANIE COUTAS

FRANCE



Contemporary Design

Passionate about craftsmanship and outstanding know-how, Stéphanie Coutas designs daringly elegant interiors combining the decorative arts with a blend of cultures — her way of affirming her idea of French luxury, an art of living that is all about elegance.

FLORIAN DAGUET-BRESSON

FRANCE



Glass and Ceramics

Florian Daguet-Bresson presents the diversity and vivacity of a practice in full renaissance, the art of ceramics. The selection of works by Florian Daguet-Bresson showcases the best of contemporary ceramic art, through the creations of artists whose strength, genius, freedom and sometimes humor give rise to artistic perceptions of today.



Jewellery

Neha Dani is an artist who creates timeless jewellery masterpieces that have an intrinsic philosophy about them. Her multi-layered sculpted creations are strikingly contemporary and aim to exemplify her emotions and beliefs, traversing through childhood memories and travels. Her palette is often bold and unconventional, with striking contrasts of coloured metal and gems.

DUMONTEIL DESIGN



Contemporary Design and Sculpture

The Dumonteil gallery, created in 1982 by Dothi and Pierre Dumonteil, represents Contemporary Artists and Artist Estates of their choice. The aim of the gallery is to support artists in the development of their most ambitious projects and to promote them on the national and international scene. Whether in their various exhibition spaces, outside the walls in collaboration with public or private institutions and art fairs.

DUTKO



Contemporary Art and 20th-century Design

Jean-Jacques Dutko has been at the forefront of Paris' art community since the 1980s and is considered a pioneer in the field of 20th-century design. After rediscovering a number of design icons, in recent years Dutko has also turned his discerning eye to contemporary works, forging relationships with contemporary artists and designers, and frequently commissioning limited edition works to complement his 20th-century findings.

PATRICK FOURTIN

FRANCE

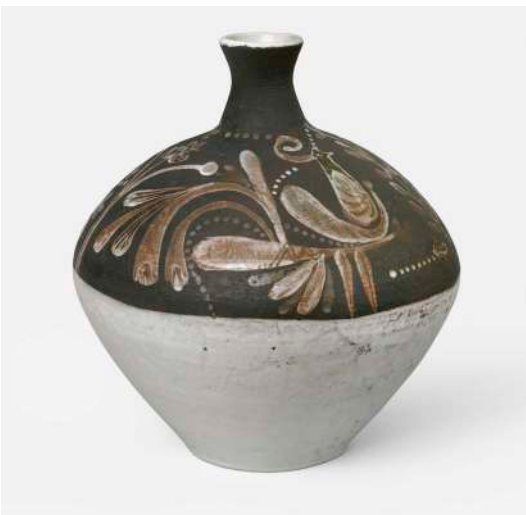


20th-century Design

Located in the Place de Valois in the 1st arrondissement of Paris since 1996, the Patrick Fourtin Gallery is specialized in 20th century furniture and decorative arts, most notably French and international 20th-century design works, as well as creations by contemporary artists. Patrick Fourtin is a member of the 'Syndicat National des Antiquaires' and an expert in 20th century furniture and decorative art for auction houses.

THOMAS FRITSCH – ARTRIUM

FRANCE



Glass and Ceramics

Thomas Fritsch opened his gallery at 6, rue de Seine in 2004 and is recognized as the leading specialist in post-war French ceramics. The gallery presents a selection of masterpieces of French ceramics from 1945 to 1970, most of them unique. From Vallauris (South of France) to La Borne (Center of France), the gallery presents a varied selection of rare or unique ceramics made by the most renowned ceramists of this period.

GALLERY FUMI

UK



Contemporary Design

Gallery FUMI is a contemporary design gallery with a unique personal touch. Founded in 2008 by Sam Pratt and Valerio Capo, the Mayfair-based gallery works with a close-knit group of international artists who hold craftsmanship and experimentation at the heart of their work. Instead of considering art and design as two separate disciplines, Gallery FUMI focuses on never-before-seen objects with a story to tell.

PORTUONDO GALLERY

UK/USA/SPAIN

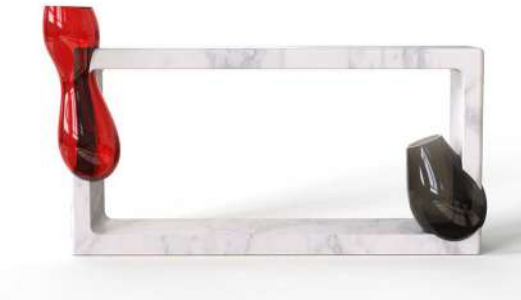


20th-century Design

Hugo & Diego Portuondo founded their gallery on their passion for the decorative arts and 20th-century design. Coming from a family of antique dealers, decorators and fabric designers, their passion for 20th Century design has grown over the years leading them to fuse contemporary art, design and antiques in an eclectic melting pot of styles, always showcasing authentic and quality pieces.

GALERIE GASTOU

FRANCE



Contemporary and 20th-century Design

Yves Gastou founded his Parisian gallery in 1986 and was joined by his son Victor in 2005. The gallery is specialised in 20th-century design and display playful and spatial furniture from the 1960's and 70's, forming an eclectic dialogue between 20th-century masters such as the Memphis group, Shiro Kuramata, and Ron Arad; with contemporary designers such as Agnès Debizet, Béatrice Serre and Emmanuel Jonckers.

GDJ DESIGN / NEW HOPE GALLERY

BELGIUM



20th-century Design

Thoroughly committed to source emblematic pieces signed by established designers as well as new talents and discoveries, Giulia De Jonckheere Design showcases designer furniture, sculpture and works of art from the post-war to the present. New Hope Gallery is the result of twenty years of passion, research and work about a certain art of living through the constitution of a remarkable collection of historic masterpieces from the second half of the 20th C. Selected Danish and American designers of this period, both modern and independent include George Nakashima, Paul Evans, Phillip Lloyd Powell, Poul Henningsen, Poul Kjærholm, Finn Juhl.

HEMMERLE

GERMANY



Jewellery

Hemmerle is a fourth-generation family-run jeweller at the vanguard of contemporary design. Founded in 1893 in Munich, Germany, it is considered one of the world's most inventive jewellers and remains renowned for its one-of-a-kind works characterised by innovative material combinations and a dedication to craftsmanship and quality. Each jewel conceived is handcrafted and layered with cultural references and is as original as a work of art.

JCRD DESIGN

UK



20th-century Design

JCRD Design features exceptionally sourced historical mid-century Brazilian furniture by some of the leading creators in the field, following a lifelong passion of London-based and Rio de Janeiro-born founder Luiz Kessler. In order to showcase the finest pieces, the gallery has developed a flexible exhibition format: rather than establishing a gallery in a fixed location, we organise exhibitions around the world.

GALERIE KREO

UK/FRANCE



Contemporary Design

Clémence and Didier Krzentowski founded Galerie Kreo in 1999. Galerie Kreo is recognized as one of the most influential furniture galleries on the international scene. The gallery defines itself as a "research laboratory" dedicated to the production of contemporary pieces in limited editions, by the greatest contemporary designers, from Virgil Abloh, to Ronan & Erwan Bouroullec, Pierre Charpin, Naoto Fukasawa, Jaime Hayon, Hella Jongerius, Jasper Morrison, Marc Newson, or Studio Wieki Somers.

GALERIE JACQUES LACOSTE

FRANCE



20th-century Design

Specializing in 20th-century design and with a passion for works from the 1950s, Lacoste collects and exhibits works by renowned designers and artists; including Serge Mouille, Jean Prouvé, Diego Giacometti, Alexandre Noll, Georges Jouve, and André Borderie and is considered an essential reference regarding the work of Jean Royère.

LAFFANOUR / GALERIE DOWNTOWN

FRANCE



20th-century Design

Since its opening in the early 80s, the Gallery Downtown, created by François Laffanour, has explored, shown through its exhibitions, and rehabilitated a field little known at the time: the 20th-century furniture made by architects. Creators— mostly architects — Europeans and Americans who, after the Second World War, brought another conception in the art of furnishing oneself, dictated by a need for freedom and efficiency, at the service of a new art of living in an era of technological and scientific development.

THIERRY LEMAIRE

FRANCE



Contemporary Design

Thierry Lemaire defines himself as an ensemblier in the great tradition of French decorative arts. Trained as an architect, he translates his timeless, elegant and comfortable style into exclusive interior design or decoration projects, where he combines raw materials and sophistication with particular attention to detail. Lover of generous and refined lines, he also designs and sells some of his creations based on a team of craftsmen that he presents in his gallery.

GALLERY LVS & CRAFT

SOUTH KOREA



Glass and Ceramics

Gallery LVS founded in Seoul by Wonju (Judy) Lee in 2008, has played a pivotal role in introducing various modern and contemporary Korean art, also includes Craft art. Lee planned and promoted the Korean contemporary white porcelain project, 'White in White' and played a major role in establishing the Yanggu Porcelain Museum. Invited to participate in 'Collect London' for ten years and continuously exhibited in leading art and craft fairs, Lee has been committed to introducing leading figures of craft arts by collaborating with LOEWE Foundation.

MAISON PARISIENNE

FRANCE



Contemporary Design

Since 2008, maison parisienne, a nomadic gallery based in Paris, has been selecting the best of contemporary French craftsmanship and high-end furniture design. maison parisienne presents a collection of rare objects in private mansions, luxury apartments, hotels and carefully selected fairs. maison parisienne reveals and rediscovers a French art-de-vivre that is as audacious as it is contemporary. For PAD London, maison parisienne will highlight a selection of artists who are excelling in their medium: ceramics, wood, metal, glass, textiles, feathers and more.

MAISONJAUNE STUDIO

FRANCE



20th-century Design

Maisonjaune Studio enables people to see, breathe and appreciate art. This interior design gallery offers a subtle mix of rare vintage pieces, materials, and lights. Founders Elodie and Julien Régnier define their studio as an eclectic, unexpected and convivial intersection between the past and the present, with a sensitive and authentic approach to design.



20th-century Design

The founder of the gallery, Alain Marcelpoil, is a renowned expert in the field of 20th-century design, recognized internationally as the leading specialist in the work of the designer Andre Sornay (1902-2000). Alain Marcelpoil launched his gallery in June 2006, and while promoting André Sornay's work over the last fifteen years, Alain Marcelpoil has also explored that of other artists. Born in Lyon, Alain Marcelpoil also has a particular interest in 20th-century artists from that region.

MELCHIORRI STUDIO GALLERY



Contemporary Design

Melchiorri Studio Gallery is a London and Milan-based gallery dedicated to exploring the research of Unique Edition Artworks. The Company is actively involved in Bespoke Design services and the production of tailor-made products with a unique combination of design and finish. Melchiorri Studio Gallery has a dedicated in-house design and production studio capable of realising custom commissions..

GALERIE MEUBLES ET LUMIÈRES



20th-century Design

Created by Guilhem Faget and Alexandre Goult, Galerie Meubles et Lumières is a renowned furniture and lighting specialist of French and Italian design from the 1950's to 1970's. The gallery offers a selection of rare and vintage pieces from various designers who marked the second half of the 20th century, such as Robert Mathieu, Pierre Guariche, Gino Sarfatti, Maria Pergam and Pierre Paulin.



20th-century Design

Modernity specializes in the collection and sale of rare and high-grade furniture, ceramics, glass, lighting, and jewellery by the most renowned Scandinavian designers of the 20th century. With a strong emphasis on post-war design, Modernity has established itself as one of the leading galleries in Northern Europe.

SARAH MYERSCOUGH GALLERY

UK



Contemporary Design

Established in 1998, Sarah Myerscough Gallery represents a distinguished group of contemporary craft and design artists, specialising in material-led processes with a focus on wood and natural materials. The gallery relishes the connection to the natural world. It embraces the elemental and the imperfect and seeks creative authenticity and integrity.

NILUFAR

ITALY



Contemporary and 20th-century Design

Originally located in via Bigli and specializing in antique carpets, Nilufar Gallery moved to via della Spiga and ventured into modern and contemporary design by the late 1990s, exhibiting works by the great mid-century designers alongside unique carpets, cutting-edge furniture designs and pieces by emerging talents. Since the 2000s, Nilufar has hosted experimentations and “cross-contamination” exhibitions, enhancing the Gallery’s reputation as an international reference point for historical and contemporary design lovers. In 2015, Nina Yashar opened Nilufar Depot in a former silverware factory building.



Jewellery

Objet d'Emotion is a curated fine-jewellery gallery dreamt up by Valery Demure to showcase and mix jewels from the best contemporary jewellery designers, in a modern and unconventional presentation. The team host intimate presentations throughout the year and their concept can be experienced at PAD in London, as well as at private events throughout the year. Her team is active all year round on behalf of clients – proposing, sourcing and commissioning fine jewellery from an unparalleled catalogue of designers, guiding clients to rethink how they combine, style and collect jewels.

OBJECTS WITH NARRATIVES

BELGIUM/SWITZERLAND



Contemporary Design

Objects With Narratives is a gallery for designers by designers, who believe in the possibility of shifting the motivation of aesthetic design and function to objects fuelled by stories. Narration has a much more powerful effect than aesthetic or functional considerations alone. With this approach, objects are no longer a mere medium and it is more a matter of having a narrative than the physical object. They focus on the value and history of the pieces themselves rather than on the name, style or era of the designers who represent the objects.

OPERA GALLERY

UK



Contemporary and Modern Art

Opera Gallery has an established reputation as one of the leading international dealers and representatives of Modern and Contemporary Art. Since its inception in 1994, Opera Gallery has strived to offer unique access to a diversity of Modern and Contemporary artists through an exciting programme of curated exhibitions and high profile art fairs. They also boast an eclectic inventory of important works by the likes of Pablo Picasso, Marc Chagall, Bernard Buffet, Alexander Calder, Jean Dubuffet, Andy Warhol and Keith Haring.



Contemporary Design

Since 2008, Ormond Editions represents a selection of the most esteemed talents of contemporary design. Its gallery, active in Geneva and Zurich, showcases a carefully curated mix of prestigious furniture, lighting and objects, reflecting its rigorous attention to details, its respect for craftsmanship and materiality. Having built close collaborative relations with the international clientele which includes architects and interior designers, Ormond Editions has proven to be one of the key players in the field.

PORTUONDO PARIS



Contemporary and 20th-century Design

Portuondo Gallery specialises in furniture and decorative objects from the 1950s to the present day. Highlighting the design of the 70s, with a selection of pieces in stainless steel, Lacquered wood and fractal resin, dear to the gallery. Also recognized for highlighting contemporary creation, Horacio and Julia Portuondo will also exhibit artists who work exclusively with the gallery. The sculpture and marble tables by Jean Frederic Bourdier and bronze creations by Clotilde Ancarani will blend wonderfully into this 70s atmosphere. A selection of Julia Munoz jewellery with hand made uniques pieces in bronze and semiprecious stones will be presented this edition

GALERIE MÉLISSA PAUL



Contemporary and 20th-century Design

At a crossroads between art, design and sculpture, Galerie MéliSSa Paul exhibits the works of contemporary artists in dialogue with 20th-century modern design. The curation of the gallery is dictated by the true, timeless aesthetic quality of the pieces, as opposed to fleeting trends. MéliSSa Paul takes pride in discovering new talents as well as working with established artists who challenge, question, and stretch the boundaries of shapes, textures and materials.

GALERIE PHILIA

USA/SWITZERLAND/SINGAPORE



Contemporary Design

Launched in 2015, Galerie Philia is an international contemporary design and modern art gallery representing emerging and established designers and artists. The gallery is the brainchild of two brothers who share a lifetime passion for art, literature, and philosophy. Their distinct academic background sets them apart from their peers, as it sees them following a rhizomatic and transcultural approach in the way they select works. The gallery takes pride in discovering new talents, providing them with multiple international platforms to showcase their latest creations.

PRIVEEKOLLEKTIE

THE NETHERLANDS



Contemporary Design

Priveekollektie Contemporary Art | Design is a leading international gallery of contemporary and functional art. Priveekollektie, translated private collection, indicates the policy and provenance of the gallery, reflecting the gallery's legacy in personal curation and intimate bonds with collectors and artists. Opened in 2006 by avid Dutch collectors Irving and Miriam van Dijk, the gallery prides itself on its expansive knowledge, eye for detail, and unique taste to merge together the two disciplines, art and design.

RAPHAELLA RIBOUD-SEYDOUX

FRANCE



Glass and Ceramics

Raphaella Riboud-Seydoux presents a selection of beautiful, surprising, modern and sometimes funny works. From Carla Accardi, a major figure in Italian abstract art and arte povera, to Michaela Younge, a 24-year-old South African artist, this exhibition is a celebration of gesture and virtuosity. By echoing the objects of creators who, through their craftsmanship and artistic imagination, flout the classifications of plastic or decorative arts, Raphaella Riboud-Seydoux invites us to lift the seams of manual genius to appreciate its beauty.

WILLY RIZZO

FRANCE/SWITZERLAND



Contemporary and 20th-century Design

Since 2009, the Willy Rizzo Studio exhibits and sells the photographs and designs of Willy Rizzo. Born in Naples, Willy Rizzo began his 60 year-long career as a photographer in Paris in the 1940s. As a great photographer of celebrities, fashion and reportage, he has exhibited all over the world. In 1970, he started designing furniture that was elegant, sexy and functional, often citing the influence of his close friend and fellow design icon, Le Corbusier.

ACHILLE SALVAGNI ATELIER

UK/USA/ITALY



Contemporary Design

Achille Salvagni founded Achille Salvagni Atelier in 2013 as a studio devoted to the production of his limited-edition furniture and lighting. Using only the noblest materials, his works are realised by Rome's rich collection of skilled artisans renowned for their traditional techniques. With a couturier's approach to design, Salvagni is dedicated to retaining authentic touches in his contemporary offering, bringing the decorative grandeur of the Roman Empire into wholly modern pieces.

ATELIER ADRIAN SASSOON

UK



Glass and Ceramics

Established in 1994, Adrian Sassoon is the UK's leading gallery for international contemporary works of sculptural art and design. The gallery presents highly innovative and uniquely skilled contemporary artists working across a range of mediums including metal, glass, ceramics, and wood. For 30 years Adrian Sassoon has strategically promoted designers through major solo shows, both in the UK and internationally, as well as through exhibiting at the world's most prestigious art fairs.

GALERIE SCÈNE OUVERTE

FRANCE



Contemporary Design

The desire to open this gallery was born from Bonnel's desire to share her vision of contemporary creation, to be able to present art as well as functional sculptures/collectible design, without constraint or restriction. Bonnel selects artists whose personality and unique creations illustrate her passion for craftsmanship. Scène Ouverte presents both unique pieces by artists, or works created a very limited series.

SECRET GALLERY

FRANCE



Contemporary Design

SECRET GALLERY is a unique Art and Design gallery located at 19 Rue de Varenne in the 7th arrondissement of Paris. Its founders, Nathalie Elmaleh and Laurent Teboul, are not only collectors but also scenographers and artistic directors, bringing a fresh and innovative approach. The gallery presents three thematic exhibitions per year, the artists cross paths and offer us an intimate dialogue during an exhibition. Once can discover the work of the architect and designer Reda Amalou through his collections of design, objects and furniture, which are always at the crossroads of art and know-how.

SIDE GALLERY

SPAIN



Contemporary and 20th-century Design

SIDE Gallery, established in Barcelona and founded in November 2015 works with international design of the twentieth century, as well as contemporary design. The gallery focuses on Latin American historical design from countries such as Brasil, Mexico, or Venezuela, primarily concentrating on the work of Oscar Niemeyer, Geraldo de Barros, Lina Bo Bardi, Luis Barragán, Antonio Bonet and Joaquim Tenreiro, but also with a special sensibility for Spanish and Italian design of the past century and rare pieces by relevant architects worldwide.



Contemporary Design

Opening Spazio Nobile in 2016, Lise Coirier and Gian Giuseppe Simeone have united their passions for design and art history, initiating an erudite dialogue between contemporary applied arts, design and photography. With no boundaries between disciplines, the visual arts interact with the fine arts. Commissioning a collection of unique pieces, limited editions and installations both experimental and artistic, with a particular sensitivity to everything related to nature and minerality, each year the gallery organises five exhibitions and several events in art and heritage venues.

GLENN SPIRO

UK/USA/France



Jewellery

Glenn Spiro has spent his illustrious career crafting pieces that have been coveted by jewellery collectors the world over. His colourful, innovative and unique designs have catapulted Spiro's eponymous brand to become one of the most sought-after private jewellery houses in the world. Spiro is renowned for his unconventional approach to the Haute Joaillerie world, and with it the risks which the brand takes in a realm dominated by old luxury marques and multigenerational businesses that truly sets them apart.

STEFANIDOU TSOUKALA GALLERY

GREECE



Contemporary and 20th-century Design

Stefanidou Tsoukala Gallery represents prominent Greek artists and designers alongside international designers inspired by Ancient Greece and its rich heritage. At the core of the gallery's mission is the ongoing quest for great creative talents and the celebration of both traditional craftsmanship and innovative design. Located in Athens and directed by Laura Tsoukala, the gallery acts as an unparalleled platform to introduce and showcase international collectible design by Greek creators.



Jewellery

New York-based high-jewellery house, TAFFIN, has become recognized globally over the past 27 years for its one-of-a-kind high-jewellery designs that embrace the unusual. Inspired by the work of storied French and American jewellery houses, Givenchy's contemporary designs reflect his appreciation for quality craftsmanship and the deep cultural history of high-jewellery. Givenchy has found inspiration in copper electrical wiring for his latest jewellery innovation, as well as mounting important stones in leather and coloured ceramic.

ELIE TOP



Jewellery

Designer Elie Top founded his eponymous jewellery house in 2015. Top's creativity is the reflection of his abundant imagination, which draws upon poetry, music, history, and even geography. Each collection tells an epic tale of a world emerging from time immemorial, captured by its creator to be redesigned in a uniquely modern fashion. Elie Top's otherworldly jewels evoke the designer's inspirations from across the globe and stretching back through human history.

UNFORGET



20th-century Design

Passionate about post-war creation and active in the industrial world, founder Éric Parduyns decided to set up the Unforget project to share his love with other amateurs since 2017. A Lover of decorative arts since the 80s, his collector experience began with promotional items. His taste then evolved towards post-modernism, acquiring his first Venini vases designed by Alessandro Mendini in 1990. Parduyns later discovered the work of these many artists who made the world famous Venini "furnace" and became interested in other glassmaking workshops on the island of Murano, Barovier, Seguso, Vistosi and Aureliano Toso in particular.

ROSE UNIACKE

UK



20th-century Design

Alongside Rose Uniacke's established interior design firm, she is also a designer of furniture and lighting as well as a dealer of both antique and contemporary furniture. One of Uniacke's defining style characteristics is her belief in combining the old and the new. Much like her interiors, her pieces of furniture reflect her personal aesthetic: her predilection for light, air and space; her pursuit of both simplicity and refinement; and the importance she attaches to materials and to texture.

HERVÉ VAN DER STRAETEN

FRANCE



Contemporary Design

Since 1999, the Hervé Van der Straeten gallery has been presenting its creations in a serene, luminous space in the historic Marais district. Hervé Van der Straeten designs furniture, mirrors and lighting of the highest quality in his Parisian workshops, surrounded by passionate men and women expertly trained in their craft. Identifiable at first glance, the unique and distinctive works of Hervé Van der Straeten's are collected throughout the world.

VERTES

SWITZERLAND



Contemporary and Modern Art

Founded by Laszlo Vertes in 1980, Vertes was conceived as an international exhibition platform specialising in Modern & Contemporary art. Galerie von Vertes exhibits a remarkable range of works across Impressionism, Surrealism, Fauvism, German Expressionism, as well as Pop Art and contemporary art.

VIKRAM GOYAL X NILUFAR

ITALY



Contemporary Design

At this year's edition, leading Indian designer Vikram Goyal will showcase collectible design pieces that demonstrate his New Delhi-based workshop's mastery of metal. Curated by Nilufar, this notable debut at the fair marks Goyal's first international exhibition. The collection of ten limited-edition pieces features furniture, lighting and wall panels, all intricately hand-made by expert artisans. Each object explores and celebrates a range of heritage techniques in metalwork that have existed in India as early as the 3rd or 4th century BC. One such is repoussé, the art of painstakingly hand-beating a metal sheet into three-dimensional forms.

WADDINGTON CUSTOT

UK



Contemporary and Modern Art

Waddington Custot makes its return to PAD after Stéphane Custot created and managed it with Patrick Perrin from 1997 to 2010, establishing its presence in London in 2007. Originally established on Cork Street in 1958 as Waddington Galleries, Waddington Custot was formed in 2010 with the partnership of long-time London art dealer Leslie Waddington, and French art dealer Stéphane Custot. The gallery has since cultivated a rich heritage and an international reputation for expertise in outstanding works by modern and contemporary masters, with a particular focus on monumental sculpture.

GALERIE MARIA WETTERGREN

FRANCE



Contemporary Design

Founded by Maria Wettergren in 2010, the gallery specializes in contemporary art and design, offering unique and limited edition works in the fields of collectible furniture, textile art, sculpture, ceramics and glass. Galerie Maria Wettergren represents leading interdisciplinary Scandinavian artists, designers and architects such as Mathias Bengtsson, Astrid Krogh, Rasmus Fenhann, Ilkka Suppanen, Tora Urup, Hanne Friis, Gjertrud Hals and Ditte Hammerstroem.

SELECTION COMMITTEE



Composed of well-known and recognised dealers, each in his or her own specialty, the committee examines new applications according to the criteria of ethics, quality and aesthetics which are the foundation of the PAD's reputation.

The Selection Committee advise the organisers of the PAD on the strategic and political orientations of the art market and its developments and constitutes a "parliament" representing the exhibitors and their different sensibilities.

At the request of the organisers, the Selection Committee may, in certain exceptional circumstances, be asked to vote in order to orient choices.



GABRIELLE AMMANN
Ammann//Gallery



LOÏC LE GAILLARD
Carpenters
Workshop Gallery



**VALERIO CAPO &
SAM PRATT**
Gallery Fumi



**CHRISTIAN
HEMMERLE**
Hemmerle



**ANDREW
DUNCANSON &
ISAAC PINEUS**
Modernity



SARAH MYERSCOUGH



NINA YASHAR
Nilufar Gallery



ADRIAN SASSOON
Adrian Sassoon



GLENN SPIRO



ROSE UNIACKE



MARIA WETTERGREN
Galerie Maria
Wettergren

PAD LONDON PRIZE JURY



Every year, PAD London select winners for the following prizes:

- Booth Prize
- Contemporary Design Prize
- Historical Design Prize
- Jewellery Gallery Prize

These prizes are awarded by PAD jury President Tim Marlow as well as by numerous experts, collectors, curators, architects and decorators with a passion for design.

PRESIDENT



TIM MARLOW
Director, Design
Museum

HONORARY PRESIDENTS



JASPER CONRAN OBE
CEO & Chairman,
Jasper Conran Group



JACQUES GRANGE
Interior Designer



YANA PEEL
Global Head Of Arts &
Culture, Chanel



FRANCIS SULTANA
Interior Designer



**JEAN-MICHEL
WILMOTTE**
Architect

JUDGES



SOPHIE ASHBY
Interior Designer



TOM DIXON
Designer



LADY ELENA FOSTER
Collector



**GREGORY
GATSERELIA**
Interior Designer



VEERE GRENNEY
Interior Designer



FRAN HICKMAN
Interior Designer



RITA KONIG
Interior Designer



PETER MIKIC
Interior Designer



CARLOS MOTA
Interior Designer



SIMON RAWLINGS
Creative Director,
David Collins Studio



CHRISTINA SEILERN
Architect



**BRIGITTA
SPINOCCHIA FREUND**
Architect & Interior
Designer



EMILY TODHUNTER
Interior Designer



FABIEN VALLÉRIAN
International Director
Of Arts & Culture,
Ruinart



TINO ZERVUDACHI
Interior Designer

PARTNERS



MAIN SPONSORS



PARTNERS

TASCHEN

Jetfly

MEDIA

Galerie

Milk
DECORATION

THE ART NEWSPAPER

BAZAAR
Harper's

de
zeen

Numéro
art

COLLABORATION

Estelle Pigault
Artist

Sofia de Moser Leitão
Ceramicist

15th
PAD
L O N D O N
DESIGN + ART

PRESS ENQUIRIES

Reiber PR

Bénédicte Labatut
(UK/ US/ ROW media)
E: benedicte@reiberpr.com
M: +44 7426 511 072